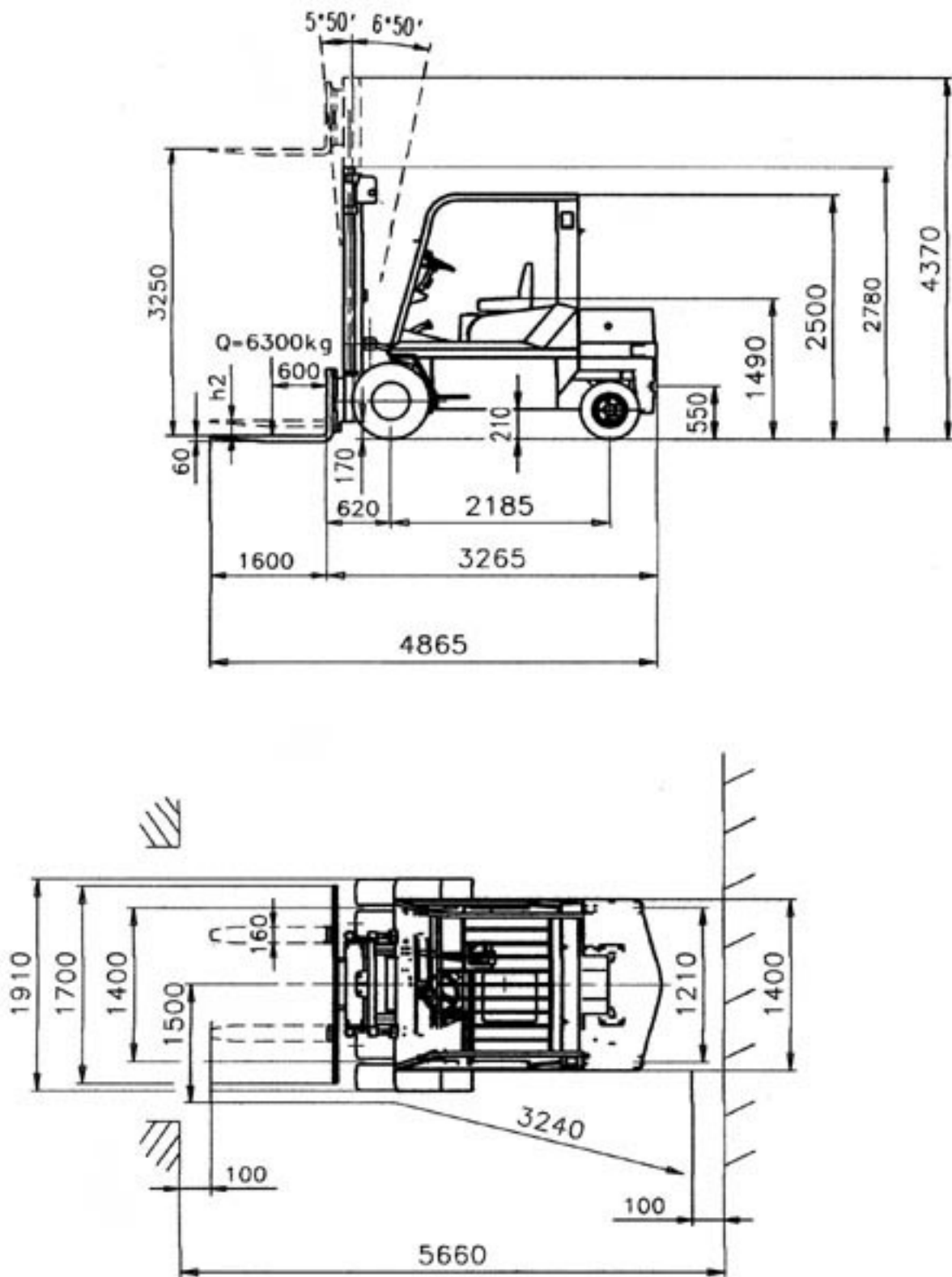




FORKLIFT TRUCK TU 63



Technical data		
Manufacturer		POBEDA-MASINAC
Model designation		TU 63
Load capacity, Q	kg	6300
Load centre, c	mm	600
Power unit		diesel
Operation		seated
Wheels:		
number, front/rear		4/2
tyres, front/rear		pneumatic/pneumatic
size, front/rear		8.25-15"/680x180x15"
Track width, front/rear	mm	1220/1210
Two-stage mast, lift, h ₃	mm	3250
Tilt of mast, forward α / backward β		5° 50'/6° 50'
Fork, s.e.l	mm	60x160x1600
Fork thickness, s	mm	60
Overall dimensions:		
length of fork face, l ₂	mm	3265
width, B	mm	1910
height of mast, lowered, h ₁	mm	2780
height of mast, extended, h ₄	mm	4370
Turning radius, W _a	mm	3240
Axle center to fork face, x	mm	620
Aisle width, A _{st}	mm	5660
Stability according to JUS/ISO 1074, yes/no		yes
Speed:		
travel, with/without load	km/h	20/21
lifting, with/without load	m/s	0,23/0,26
lowering, with/without load	m/s	0,34/0,34
Tractive force, with/without load	N	28000/21000
Climbing ability, with/without load	%	18/24
Service weight	kg	8680
Axle load with load, front/rear	N	134600/15300
Wheelbase, y	mm	2185
Ground clearance, mast/center of wheelbase	mm	170/210
Brakes:		
service/parking, foot/hand operated		foot/hand
hydraulic/mechanical		hydraulic/mechanical
Battery:		
type		lead
Volts/Ampere hrs	V/Ah	12/135
Internal combustion engine:		
manufacturer/type		IMR S44 A/I
performance according to ISO 1585	kW	50
rated speed	min ⁻¹	2100
displacement	cm ³	4070
number of strokes/number of cylinders		4/4
Transmission:		
type		hydrodynamic
speeds, forward/reverse		2/2
Clutch:		
type		torque converter
Operating pressure for attachments	bar	160



„POBEDA-MASINAC“ AD, Rade Koncara 1, 21131 Petrovaradin, Serbia & Montenegro

TELEPHONE: Switchboard: + 381 (0)21 6432 033, Director: 6432 912,
 Commercial Director: 6433 829, Sales Department: 6432 224,
 Parts & Service 6431 370, Purchasing Department: 6433 319; FAX: 6431 069

www.pobeda.co.yu

E-mail: sales@pobeda.co.yu